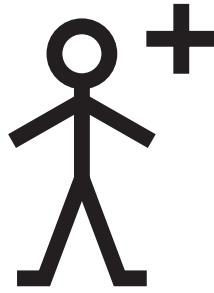
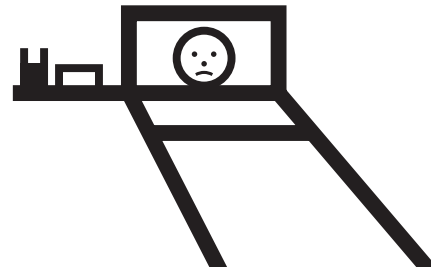


Healthcare Cards

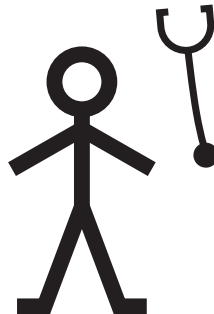
The following Makaton Symbols and Signs have been selected to use as a prompt. The symbol and sign will be printed back to back; they should then be laminated and then attached to a ring for quick reference.



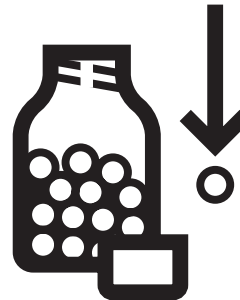
Nurse



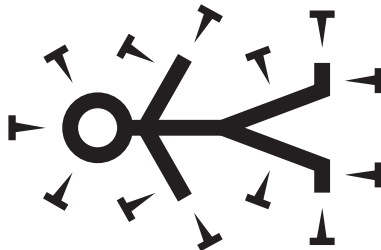
Ill



Doctor



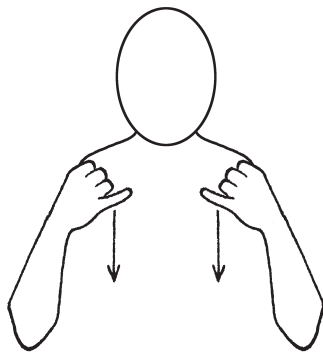
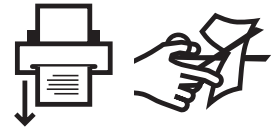
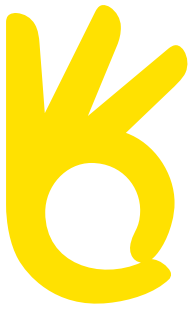
Tablet



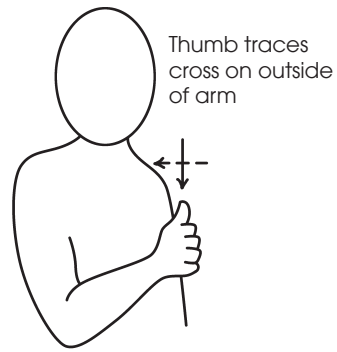
Pain



Medicine



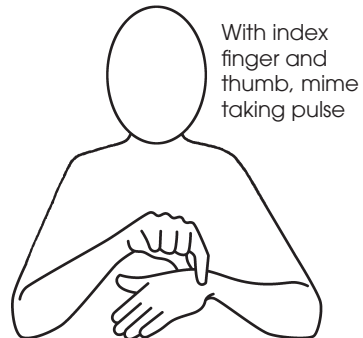
III



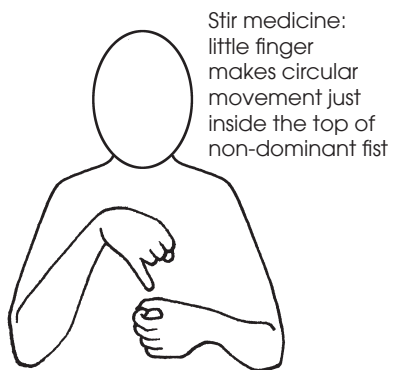
Nurse



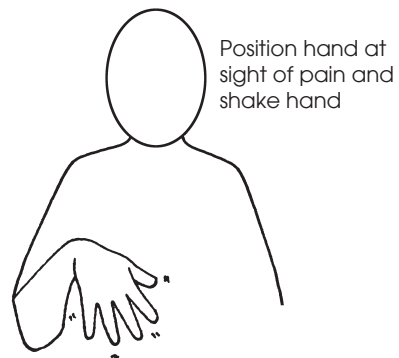
Tablet



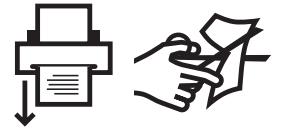
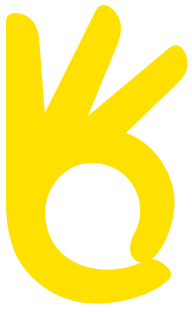
Doctor



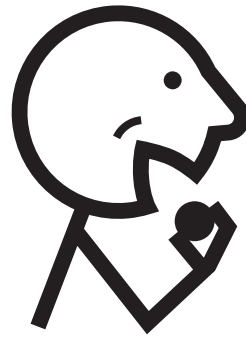
Medicine



Pain



Yes



To Eat (1)



No



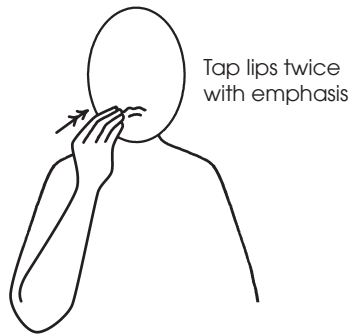
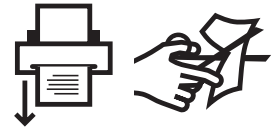
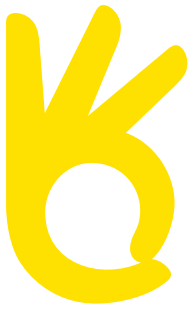
To Drink



Good (1)

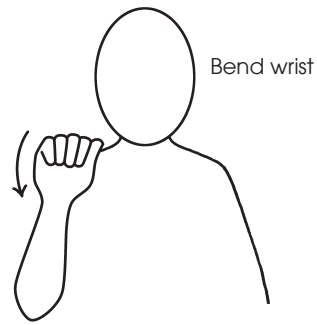


Toilet



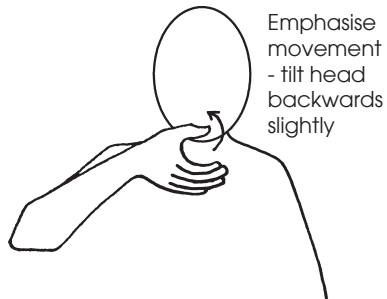
Tap lips twice
with emphasis

To Eat (1)



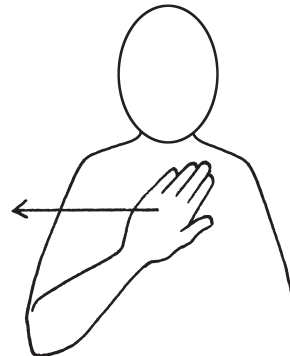
Bend wrist

Yes

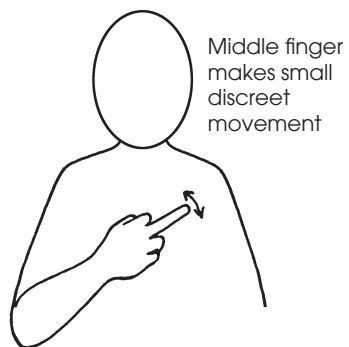


Emphasise
movement
- tilt head
backwards
slightly

To Drink



No



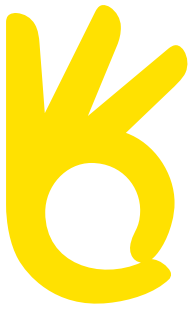
Middle finger
makes small
discreet
movement

Toilet (1)

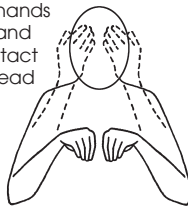


Use both
hands for
'Very Good'

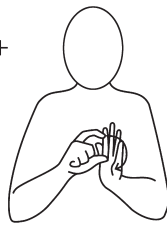
Good (1)



Bunched hands move up and make contact with forehead



+

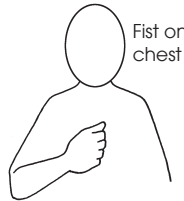


Dominant hand makes D against non-dominant index finger. Twist dominant hand forward pivoting on thumb tip



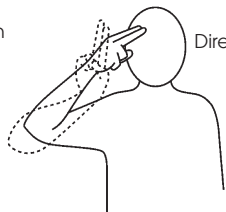
Sign finishes at fingertips

Learning Disability Week



Fist on chest

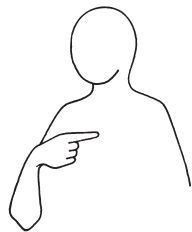
My



Directional

name

is... (finger spell initial first letter of your name)

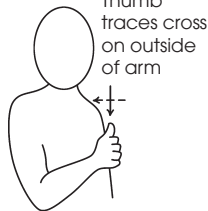


I

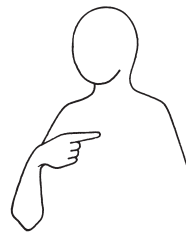
am

a

Nurse



Thumb traces cross on outside of arm



I

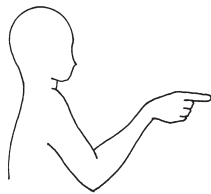
am

a

Doctor



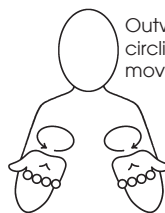
With index finger and thumb, mime taking pulse



Are **you** in **pain?**



Position hand at sight of pain and shake hand

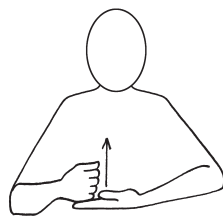


Where does it **hurt?**

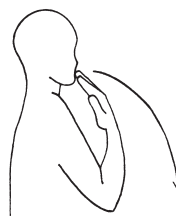
Outward circling movement



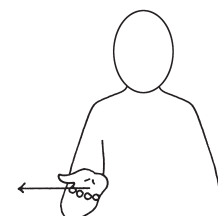
Position hand at sight of pain and shake hand



Can I **help** you?

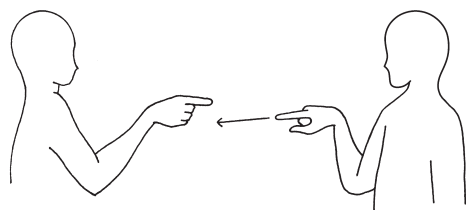


Please



lie down

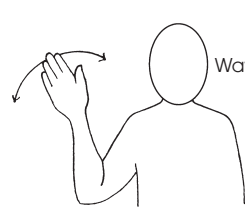
Dominant flat hand, palm up, makes short movement towards dominant side. Directional



You can **go** **home** now, **goodbye.**



Small arced movement - placement can be varied to suit context



Wave hand